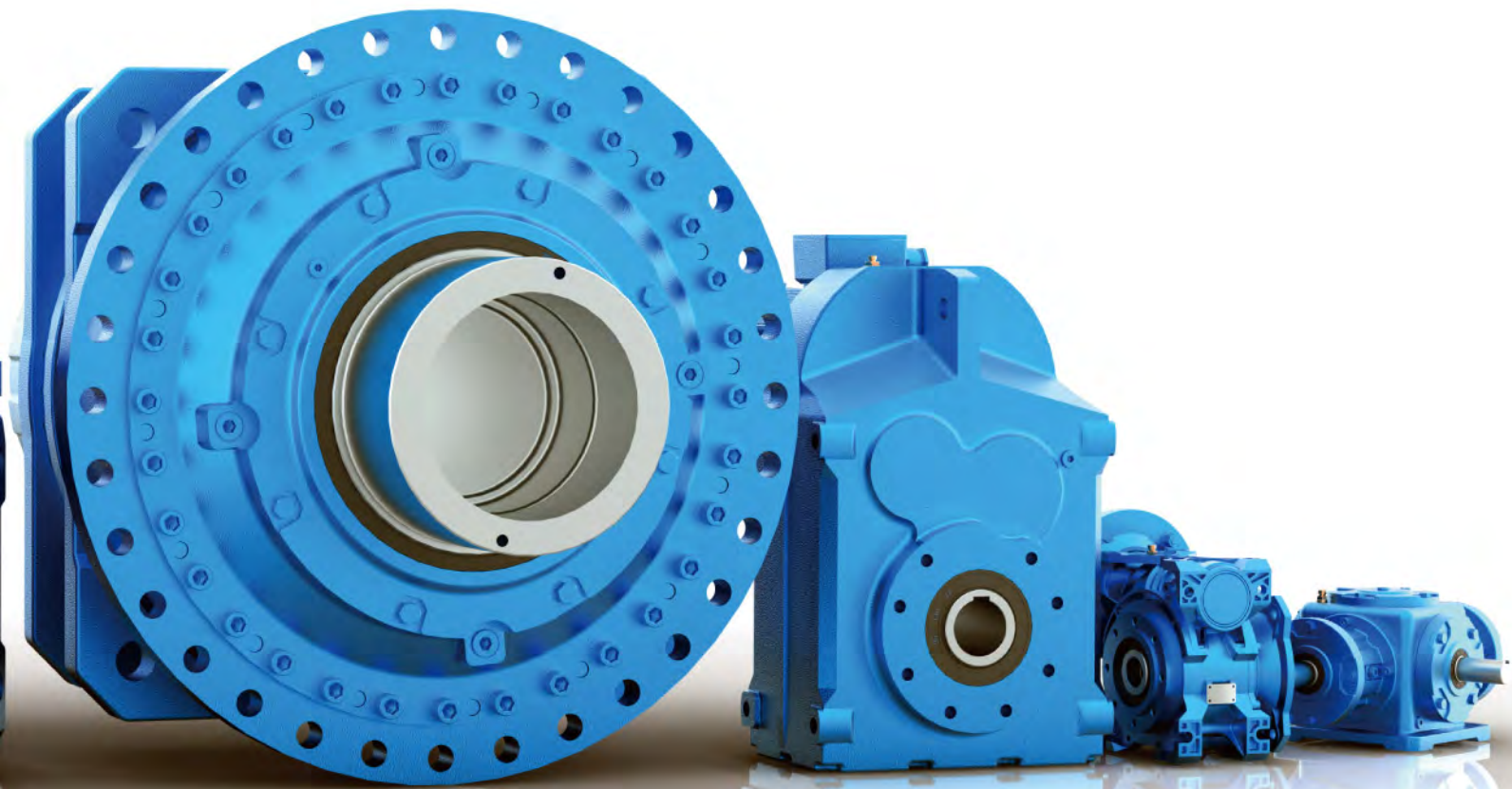


BONENG

TRANSMISSION



www.motiontech.com.au

Boneng Transmission(Suzhou) Co.,Ltd

100 Ruyuan Rd.,Xiangcheng
District,Suzhou,China.

TEL: +86-512-66189999

FAX: +86-512-66189888

E-mail: info@boneng.com

Boneng Transmission(Suzhou) Co.,Ltd
100 Ruyuan Rd.,Xiangcheng District,Suzhou,China.



About **Boneng**

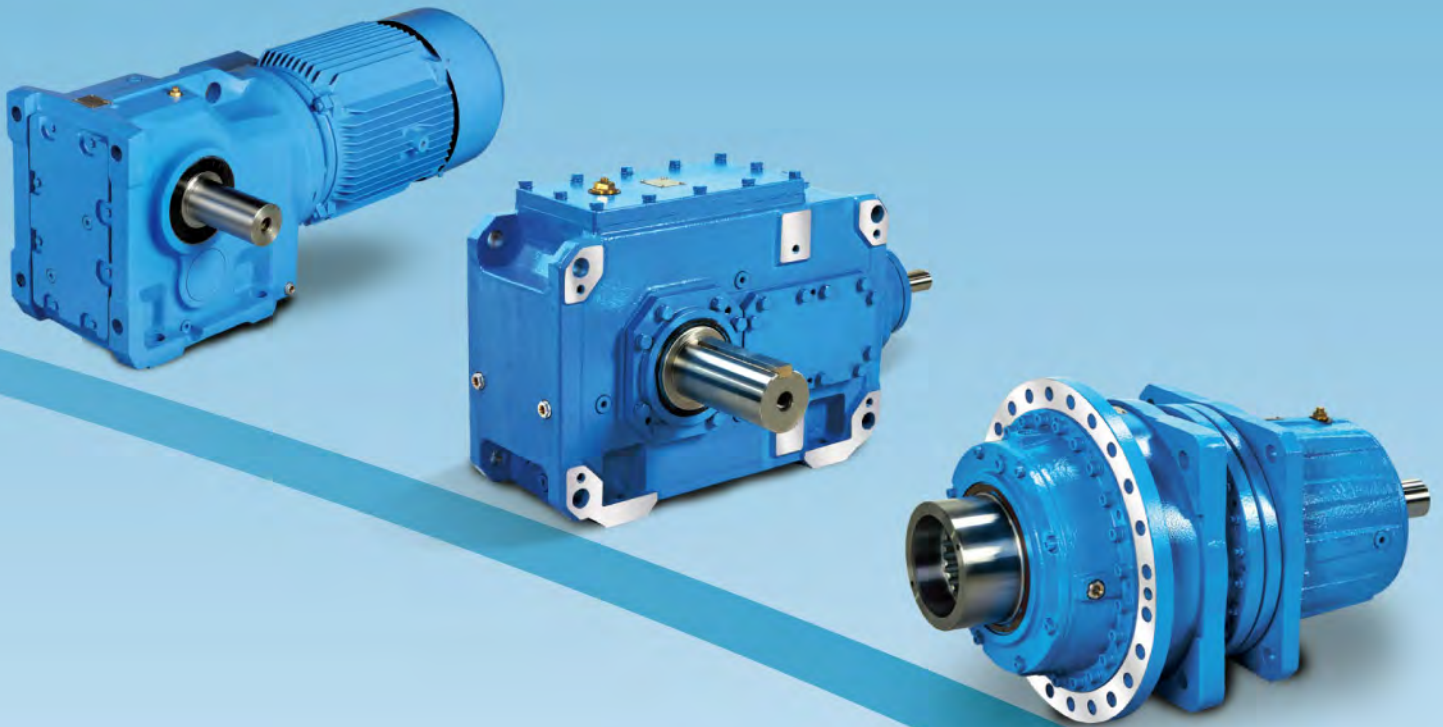
Boneng Transmission Co., LTD, established in 1992, specializes in mechanical power transmission products. Backed by a team of competent professionals and experienced quality controllers, Boneng achieves world-class quality using the most advanced processing and testing equipment. Boneng produces a wide range of general, industrial, worm, and planetary gear units, with power ranging from 0.12 to 9,550kW(0.16 to 12,800 Hp), combined with custom designed application-related gear units to provide the versatility your company requires. With products that are widely used, proven reliable, and competitively priced, Boneng Transmission is equipped to meet the varying drive application needs of numerous industries. In addition to offices in every central city of China, Boneng's steady-growing service locations abroad, provide customers with absolute reliability and outstanding service.

Boneng Transmission Co.,Ltd
69 Boneng Rd.,Oubei Town,Wenzhou,China



Product **Characteristics**

- Modular design
- Compact structure
- Reliable operation
- Extensive power coverage
- Strong load capacity
- Long service life
- Large range of output torque
- Flexible application



Product **Introduction**

Worm Gear Units

Spiral Bevel Gear Units

Industrial Gear Units

General Gear Units

Industry-specific Gear Units and Special Designs

Variable Speed Driver

Planetary Gear Units

Screw Jack



F series parallel shafts helical gear units

Ratio:4,3–273

Torque:0.11–18kN · m

Power:0.12–160kW

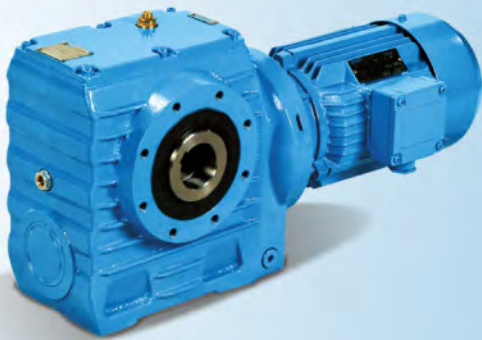


CR series helical gear units

Ratio:5–264

Torque:0.13–18kN · m

Power:0.12–160kW



S series helical-worm gear units

Ratio:23.8–389
Torque:0.073–10.2kN · m
Power:0.12–37kW



K series helical-bevel gear units

Ratio:3.5–191
Torque:0.155–50kN · m
Power:0.12–200kW

Worm Gear Units



R series worm gear units(Cast aluminium box)

Ratio:6-80

Torque:0.049-0.627kN · m

Power:0.12-4kW

Worm Gear Units



RV series worm gear units(Cast iron box)

Ratio:7.5-80

Torque:0.63-9.1kN · m

Power:0.12-45kW

Screw Jack



JW series screw jack

Loading ability:9.8-980kN

Power:0.25-21kW

Variable Speed Driver



MB series variable speed driver

Speed range:200–1000rpm
Torque:0.003–0.352kN · m
Power:0.37–22kW

Spiral Bevel Gear Units



T series spiral bevel gear units

Ratio:1、1.5、2、3
Torque:0.007–5.713kN · m
Power:0.12–200kW

Industrial Gear Units

H series industrial
helical gear units
B series industrial bevel
-helical gear units

Ratio:1.25–450
Torque:2.3–900kN · m
Power:4–5688kW

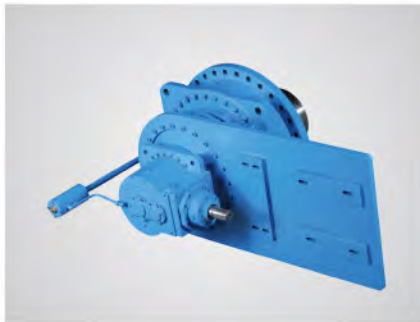
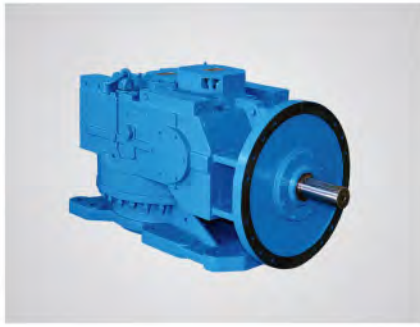


Planetary Gear Units

P series planetary gear units

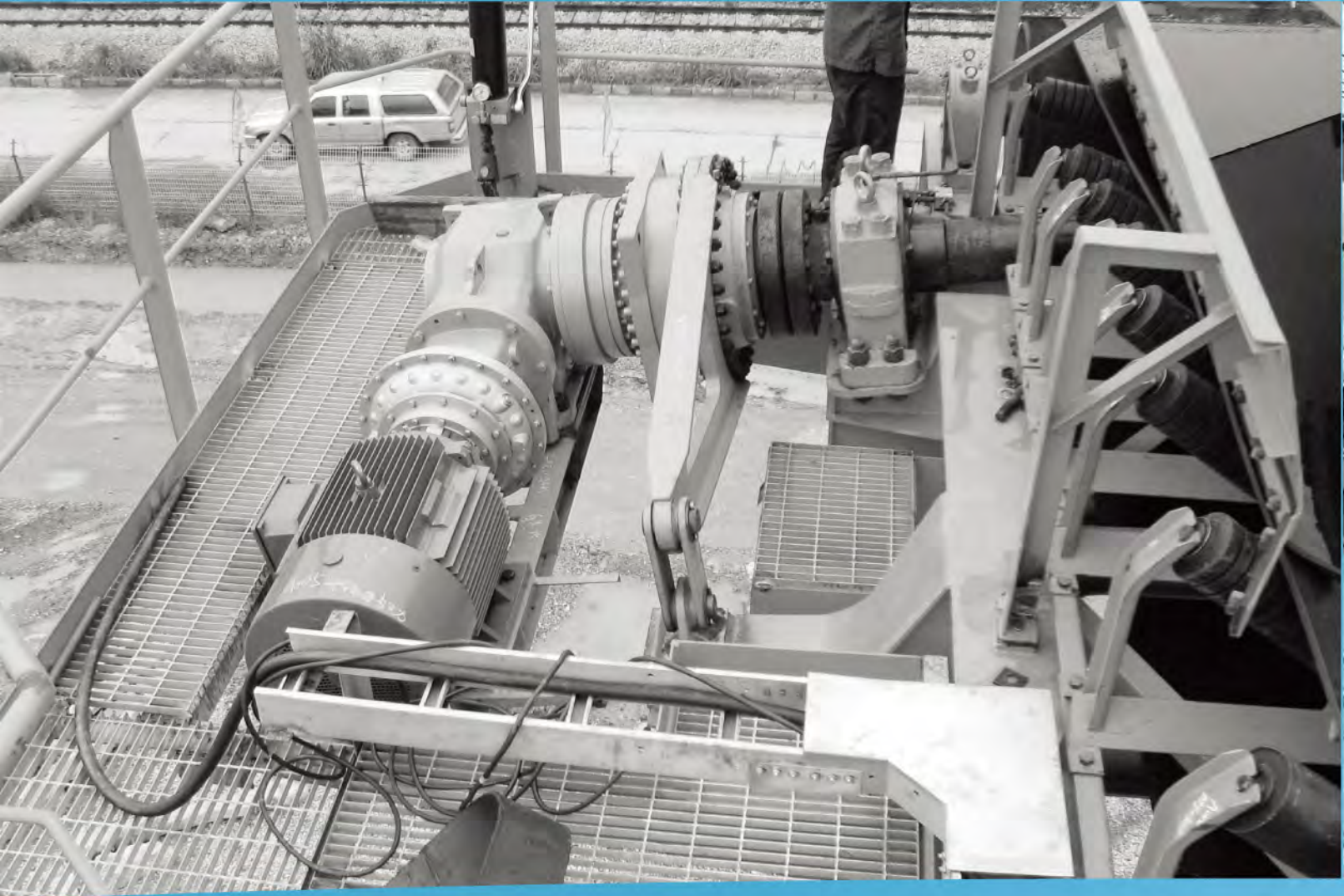
Ratio:25–4000
Torque:22–2600kN · m
Power:0.4–17630kW





Contact a Boneng representative today to discuss your special design needs.

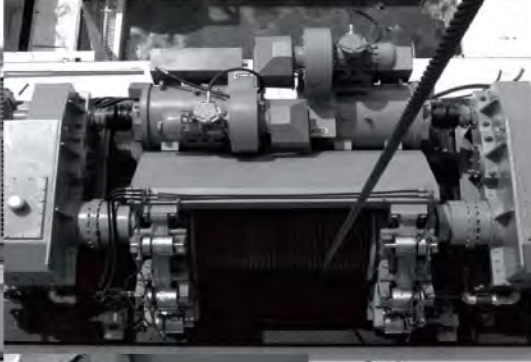
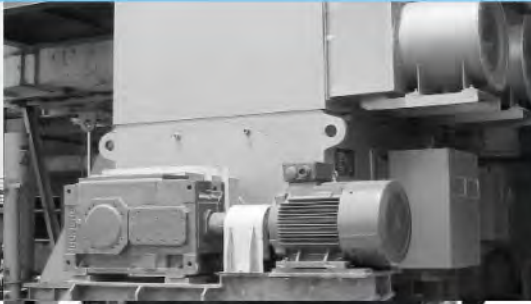
Industry-specific Gear Units and Special Designs



Industries **Served**

The processing offered by Boneng's powerful Standard, and specific gear units are endless. Our industry-specific gear units are highly specialized for particular industry sectors. Boneng Gear Units and products are found across the globe in many fields of application, including:

- Light industry
- Power generation,
- Metallurgy
- Environmental protection
- Logistics
- Mining
- Textile
- Masonry



Outstanding **Service**

The Boneng brand takes customer service seriously. We stand behind our goods by offering a standard 1-year warranty on all Boneng Transmission products. In addition to our warranty, we have specially trained knowledgeable personnel all over the world who can give competent advice, lead time, and reliable service. Our personnel can provide the right service for all your needs including, preventative maintenance, replacement parts, order status, answering technical questions, and order expediting.



BONENG

International Sales&Service Network



■ Production base
● Branches

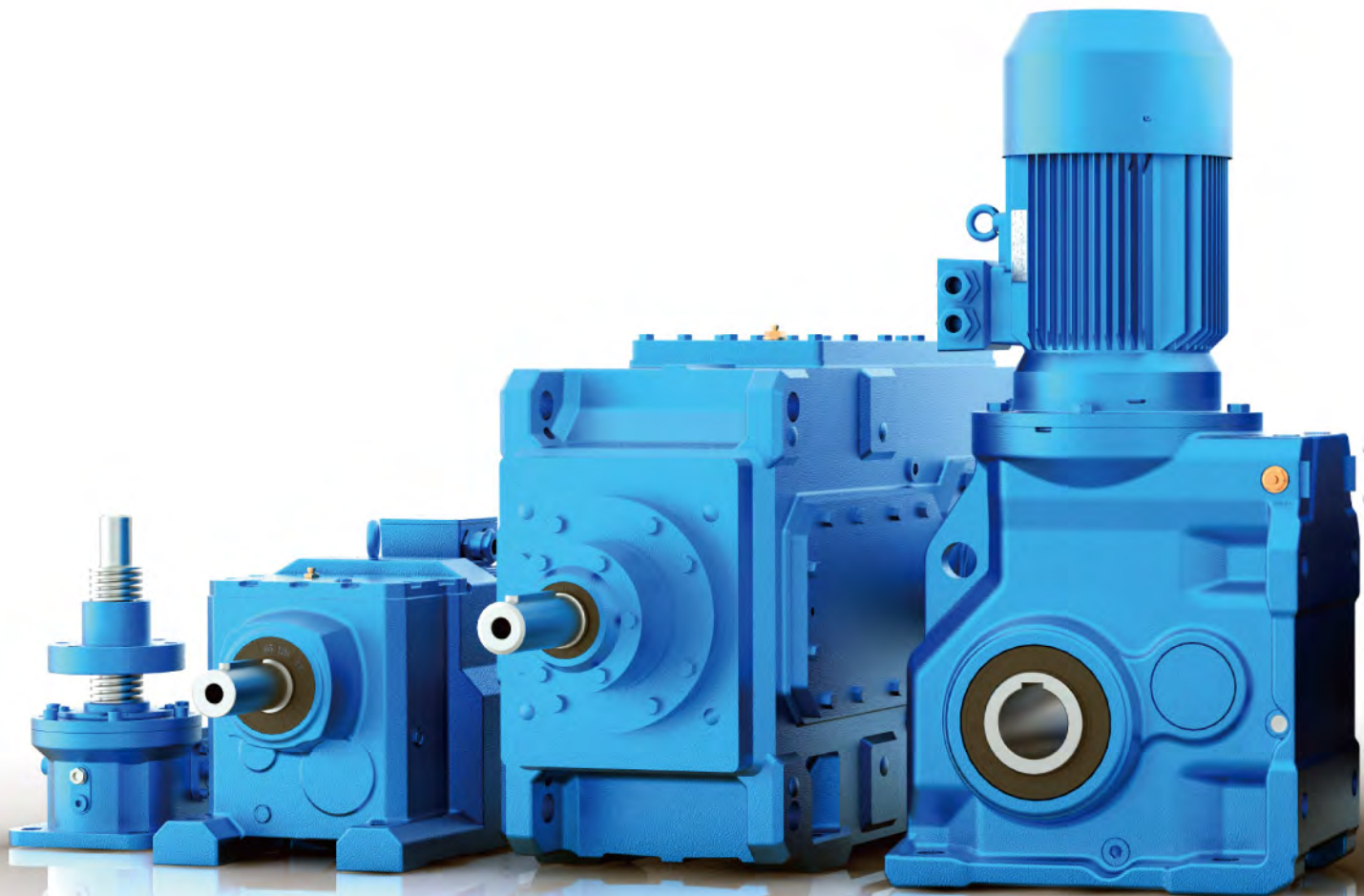
International Department
TEL: +86-512-66189922
FAX: +86-512-66189627
E-mail: info@boneng.com

BonengTransmission(India)Pvt.Ltd
No.603,Bhumiraj Costa Rica Commercial
Building,Plot1&2,Palm Beach Road,Sector
18,Sanpada,Navi Mumbai400705 India
E-mail:india@boneng.com
TEL:+91 22 2781 3385
FAX:+91 22 2781 3386

BonengTransmission(USA)LLC.
1670 ENTERPRISE PARKWAY,
TWINSBURG, OH 44087
E-mail: america@boneng.com
TEL:1-330-425-1516
FAX:1-330-425-1519



www.boneng.com



Distributors for Australia & New Zealand

MOTION TECHNOLOGIES PTY LTD

24/22-30 Northumberland Road
Caringbah NSW 2229 Australia

Phone: (02) 9524 4782

Fax: (02) 9525 3878

sales@motiontech.com.au

www.motiontech.com.au

© 02/04/19